



# 02

## AIR OPERATED GREASE PUMPS AND KITS

|                      |       |    |
|----------------------|-------|----|
| PUMPMaster 3         | _____ | 20 |
| PUMPMaster 3+3       | _____ | 20 |
| PUMPMaster 6         | _____ | 21 |
| PUMP CONNECTION KITS | _____ | 22 |
| GREASE PUMP KITS     | _____ | 23 |
| PUMP ACCESSORIES     | _____ | 24 |

**404 100 / 407 200 / 409 200**

**PUMPMASTER 3, 55:1 PRESSURE RATIO GREASE PUMPS**



Double acting air operated pumps for high pressure greasing. Recommended use in mobile units and single point dispensing units when the hose reel is connected directly to the pump outlet.

Typically used in workshops, service stations, fleet maintenance in mining, agriculture, armed forces, construction, trains, etc.

Pumps include height adjustable bung adaptor.

**Models**

| APPLICATION                | SUCTION TUBE HEIGHT | TOTAL HEIGHT | WEIGHT | PART N.º       |
|----------------------------|---------------------|--------------|--------|----------------|
| 12,5 - 20 Kg (40 lb) pails | 450 mm              | 650 mm       | 3,5 Kg | <b>404 100</b> |
| 50 Kg (120 lb) drum        | 510 mm              | 710 mm       | 3,7 Kg | <b>405 100</b> |
| 50 Kg (120 lb) drum        | 725 mm              | 925 mm       | 4,3 Kg | <b>407 200</b> |
| 185 Kg (400 lb) drum       | 920 mm              | 1,120 mm     | 4,8 Kg | <b>409 200</b> |

Pump outlet pressure



— Air inlet pressure 84 psi (6 bar).  
— Air inlet pressure 63 psi (4,5 bar).  
— Air inlet pressure 42 psi (3 bar).

**Technical data**

|   |                           |
|---|---------------------------|
| Pressure ratio                          | 55:1                      |
| Pump tube diameter                      | 26 mm (approx. 1")        |
| Air piston diameter                     | 70 mm (approx. 3")        |
| Air piston stroke                       | 35 mm (1,5")              |
| Maximum free flow capacity <sup>1</sup> | 600 gr/min (ounces / min) |
| Minimum air pressure                    | 3 bar (42 psi)            |
| Maximum air pressure                    | 10 bar (140 psi)          |
| Maximum fluid pressure                  | 550 bar (7.700 psi)       |
| Air inlet                               | 1/4" BSPT (F)             |
| Fluid outlet                            | 1/4" BSP (F)              |

<sup>1</sup> Free delivery at 7 bar air inlet pressure, using NLGI I grease at 20°C.

**402 025**

**PUMPMASTER 3+3, 55:1 PRESSURE RATIO GREASE PUMPS**



Double acting air operated pumps with reinforced foot and pressure valves for high pressure greasing. Recommended use in mobile units when a greater delivery is required, and in installations with multiple dispensing points.

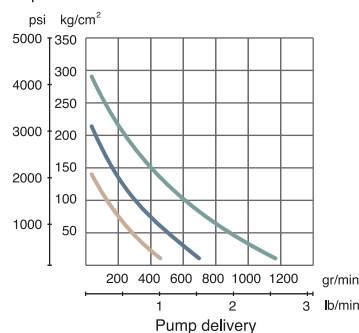
Typically used in workshops, service stations, fast lube centers, fleet maintenance in mining, agriculture, armed forces, construction, trains, etc.

Pumps include height adjustable bung adaptor.

**Models**

| APPLICATION             | SUCTION TUBE HEIGHT | TOTAL HEIGHT | WEIGHT | PART N.º       |
|-------------------------|---------------------|--------------|--------|----------------|
| 12,5 - 20 (40 lb) pails | 450 mm              | 745 mm       | 6,5 Kg | <b>402 050</b> |
| 50 Kg (120 lb) drum     | 725 mm              | 1020 mm      | 7,5 Kg | <b>402 000</b> |
| 185 Kg (400 lb) drum    | 920 mm              | 1215 mm      | 8,5 Kg | <b>402 025</b> |

Pump outlet pressure



— Air inlet pressure 84 psi (6 bar).  
— Air inlet pressure 63 psi (4,5 bar).  
— Air inlet pressure 42 psi (3 bar).

**Technical data**

|   |                             |
|---|-----------------------------|
| Pressure ratio                          | 55:1                        |
| Pump tube diameter                      | 30 mm (1.2")                |
| Air piston diameter                     | 75 mm (3")                  |
| Air piston stroke                       | 75 mm (3")                  |
| Maximum free flow capacity <sup>1</sup> | 1.200 gr/min (ounces / min) |
| Minimum air pressure                    | 3 bar (42 psi)              |
| Maximum air pressure                    | 10 bar (140 psi)            |
| Maximum fluid pressure                  | 550 bar (7.700 psi)         |
| Air inlet                               | 3/8" BSPT (F)               |
| Fluid outlet                            | 3/8" BSP (F)                |

<sup>1</sup> Free delivery at 7 bar air inlet pressure, using NLGI II grease at 20°C.

**401 025**

**PUMPMASTER 6, 55:1 PRESSURE RATIO GREASE PUMP**



Double acting air operated pumps for high pressure greasing. Recommended use in installations with multiple dispensing points and simultaneous operation outlets.

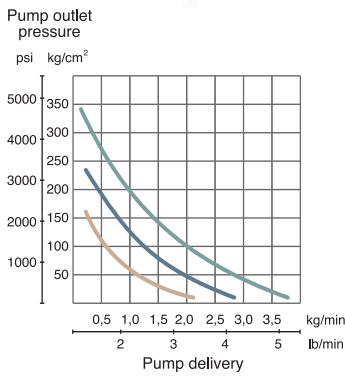
Typically used in workshops, service stations, fleet maintenance in mining, agriculture, armed forces, construction, trains, etc.

**Models**

| APPLICATION          | SUCTION TUBE HEIGHT | TOTAL HEIGHT | WEIGHT | PART NO.       |
|----------------------|---------------------|--------------|--------|----------------|
| 185 Kg (400 lb) drum | 850 mm              | 1330 mm      | Kg     | <b>401 025</b> |

**Technical data**

|   |                              |
|---|------------------------------|
| Pressure ratio                          | 55:1                         |
| Pump tube diameter                      | 35 mm (1.33")                |
| Air piston diameter                     | 160 mm (6")                  |
| Air piston stroke                       | 110 mm (4 1/4")              |
| Maximum free flow capacity <sup>1</sup> | 3200 gr/min (7.25 lbs / min) |
| Minimum air pressure                    | 3 bar (42 psi)               |
| Maximum air pressure                    | 10 bar (140 psi)             |
| Maximum fluid pressure                  | 550 bar (7.100 psi)          |
| Air inlet                               | 1/2" BSPT (F)                |
| Fluid outlet                            | 3/8" BSP (F)                 |

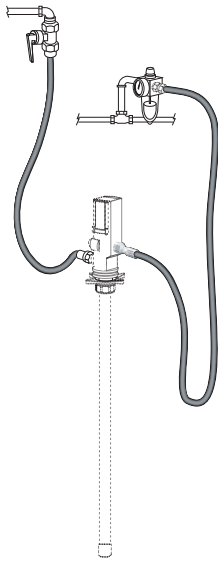


- Air inlet pressure 84 psi (6 bar).
- Air inlet pressure 63 psi (4,5 bar).
- Air inlet pressure 42 psi (3 bar).

<sup>1</sup> Free delivery at 7 bar air inlet pressure, using NLGI II grease at 20°C.

412 910 / 412 930

PUMP CONNECTION KITS



**412 910 - PumpMaster 3 pump connection kit**

Includes:

- 246 010: 1 m air hose with 1/4" BSP (MM) fittings.
- 253 114: Automatic air quick coupling 1/4" BSP (F).
- 945 516 x 2: 1/2" BSP (M) x 1/4" BSP (F) connection adapter (2 pieces).
- 259 014: Air quick connector 1/4" BSPT (M).
- 412 190: 1.5 m x Ø 1/4" grease hose, 1/4" BSP (MM).

Recommended options:

- 240 500: Air filter + regulator, 0-12 bar. 1/4" BSP (FF).
- 239 000: 1/4" BSPT (FF) connection adaptor.
- 950 304: 1/2" BSP (FF) high pressure (500 bar) ball valve.

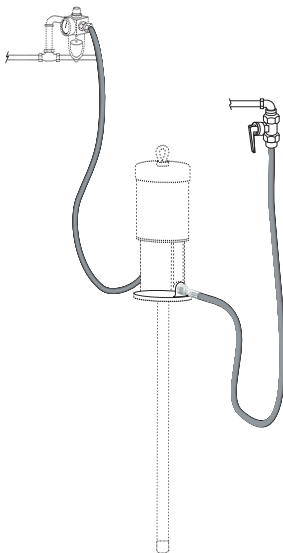
**412 970 - PumpMaster 3+3 pump connection kit**

Includes:

- 246 010: 1 m air hose with 1/4" BSP (MM) fittings.
- 253 114: Automatic air quick coupling 1/4" BSP (F).
- 259 014: Air quick connector 1/4" BSPT (M).
- 412 392: 1.5 m x Ø 3/8" grease hose, 1/2" BSP (M) - 3/8" BSP (M).
- 945 516: 1/2" BSP (M) x 1/4" BSP (F) connection adapter.

Recommended options:

- 240 500: Air filter + regulator, 0-12 bar. 1/4" BSP (FF).
- 950 304: 1/2" BSP (FF) high pressure (500 bar) ball valve.



**412 930 - PumpMaster 6 pump connection kit**

Includes:

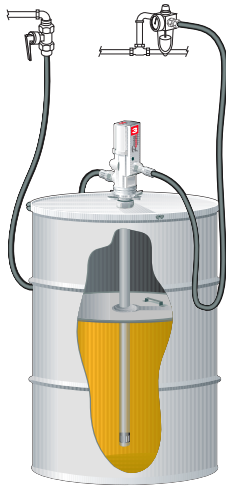
- 362 100: 1 m air hose with 1/2" BSP (MM).
- 252 112: Automatic air quick coupling 1/2" BSP (F).
- 256 012: Air quick connector 1/2" BSPT (M).
- 412 392: 1.5 m Ø 3/8" grease hose, 1/2" BSP (M) - 3/8" BSP (M).

Recommended options:

- 241 501: Air filter + regulator, 0-12 bar. 3/8" BSP (FF).
- 950 304: 1/2" BSP (FF) high pressure (500 bar) ball valve.

**429 000**

**PUMPMaster 3 GREASE PUMP KITS\***



**429 200 - PumpMaster 3 grease pump kit for 50 Kg drums**

Includes:

- 407 200: PumpMaster 3 high pressure grease pump with bung adaptor.
- 418 004: Drum cover for 50 Kg drums.
- 412 910: PumpMaster 3 air and grease line connection kit.

**429 000 - PumpMaster 3 grease pump kit for 180 Kg drums**

Includes:

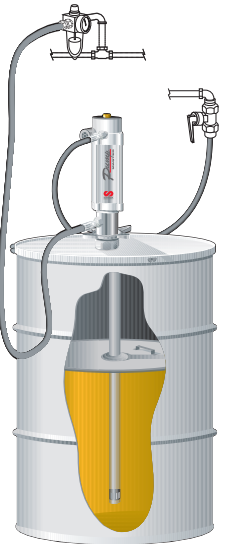
- 409 200: PumpMaster 3 high pressure grease pump with bung adaptor.
- 418 006: Drum cover for 180 Kg drums.
- 417 004: Follower plate for 180 Kg drums.
- 412 910: PumpMaster 3 air and grease line connection kit.

Recommended options for PumpMaster 3 grease pump kits:

- 240 500: Air filter + regulator.
- 950 304: 1/2" BSP (FF) high pressure (500 bar) ball valve.
- 239 000: 1/4" BSPT (MM) connection adaptor.

**429 800**

**PUMPMaster 3+3 GREASE PUMP KITS\***



**429 810 - PumpMaster 3+3 grease pump kit for 50 Kg drums**

Includes:

- 402 000: PumpMaster 3+3 high pressure grease pump with bung adaptor.
- 418 004: Drum cover for 50 Kg drums.
- 412 970: PumpMaster 4+ air and grease line connection kit.

**429 800 - PumpMaster 3+3 grease pump kit for 180 Kg drums**

Includes:

- 402 025: PumpMaster 3+3 high pressure grease pump with bung adaptor.
- 418 006: Drum cover for 180 Kg drums.
- 417 004: Follower plate for 180 Kg drums.
- 412 970: PumpMaster 4+ air and grease line connection kit.

Recommended options for PumpMaster 3+3 grease pump kits:

- 240 500: Air filter + regulator.
- 950 304: 1/2" BSP (FF) high pressure (500 bar) ball valve.
- 239 000: 1/4" BSPT (MM) connection adaptor.

**429 900**

**PUMPMaster 6 GREASE PUMP KIT\***



**429 900 - PumpMaster 6 grease pump kit for 180 Kg drums**

Includes:

- 401 025: PumpMaster 6 high pressure grease pump.
- 418 026: Drum cover for 180 Kg drums.
- 417 004: Follower plate for 180 Kg drums.
- 412 930: PumpMaster 6 air and grease line connection kit.

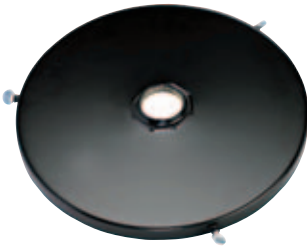
Recommended options for PumpMaster 3 grease pump kits:

- 240 500: Air filter + regulator.
- 950 304: 1/2" BSP (FF) high pressure (500 bar) ball.
- 239 004: 1/2" BSPT (MM) connection adaptor.

\* Pump kits include all hoses and adaptors required for connecting a grease pump to the air supply and the grease distribution lines.

**418 004 / 360 125**

**DRUM COVERS**



Very solid construction.

| PART N.º       | DRUM TYPE          | DRUM EXT. Ø (MAX - MIN) | PUMP FIXATION |
|----------------|--------------------|-------------------------|---------------|
| <b>418 013</b> | 12,5 - 18 Kg pails | 310 - 265 mm            | 2" BSP (F)    |
| <b>418 002</b> | 20 Kg pails        | 330 - 285 mm            | 2" BSP (F)    |
| <b>418 016</b> | 50 Kg drums        | 395 - 350 mm            | 2" BSP (F)    |
| <b>418 004</b> | 50 Kg drums        | 405 - 360 mm            | 2" BSP (F)    |
| <b>418 006</b> | 180 Kg drums       | 610 - 565 mm            | 2" BSP (F)    |
| <b>418 026</b> | 180 Kg drums       | 620 - 580 mm            | 4 x Ø 9 mm    |

Drum cover accessories.

- 741 602: Carrying handle (for covers 418 013 and 418 002).
- 360 125: Grease gun holder for drum covers.



**417 003**

**FOLLOWER PLATES**



Eliminates air pockets and aids pump prime. Rubber flange minimizes waste. With handle for easy removal from empty drums.

| PART N.º       | DRUM TYPE          | DRUM EXT. Ø (MAX - MIN.) | Ø INT. (MAX - MIN.) |
|----------------|--------------------|--------------------------|---------------------|
| <b>417 001</b> | 12,5 - 18 Kg pails | 298 - 260 mm             | 42 - 26 mm          |
| <b>417 005</b> | 20 kg pails        | 340 - 300 mm             | 42 - 26 mm          |
| <b>417 002</b> | 50 Kg drums        | 370 - 330 mm             | 42 - 26 mm          |
| <b>417 003</b> | 50 Kg drums        | 405 - 360 mm             | 42 - 26 mm          |
| <b>417 004</b> | 180 Kg drums       | 590 - 550 mm             | 42 - 26 mm          |

**410 000**

**BUNG ADAPTORS**



2" BSP (F) connection thread, adjusts to all drum covers except for cover 418 026 that requires converter 360 133.

| PART N.º       | APPLICATION          | INTERNAL JAW Ø |
|----------------|----------------------|----------------|
| <b>410 000</b> | PumpMaster 3 pumps   | 26 mm          |
| <b>410 002</b> | PumpMaster 3+3 pumps | 30 mm          |
| <b>410 001</b> | PumpMaster 6 pumps   | 35 mm          |

**360 133 - 2" BSP (F) converter plate for drum cover 418 026**

**412 103**

**GREASE HOSES**



High pressure, nitrile rubber hoses reinforced with two steel braids. Swaged fittings with swiveling nut and adaptors on both ends.

| PART N.º       | LENGTH | INTERNAL Ø | FITTING THREADS             | WORK PRESSURE      |
|----------------|--------|------------|-----------------------------|--------------------|
| <b>412 101</b> | 1,0 m  | 1/4"       | 1/4" BSP (MM)               | 500 bar (7140 psi) |
| <b>412 190</b> | 1,5 m  | 1/4"       | 1/4" BSP (MM)               | 500 bar (7140 psi) |
| <b>412 102</b> | 2,0 m  | 1/4"       | 1/4" BSP (MM)               | 500 bar (7140 psi) |
| <b>412 103</b> | 3,0 m  | 1/4"       | 1/4" BSP (MM)               | 500 bar (7140 psi) |
| <b>412 104</b> | 4,0 m  | 1/4"       | 1/4" BSP (MM)               | 500 bar (7140 psi) |
| <b>412 106</b> | 6,0 m  | 1/4"       | 1/4" BSP (MM)               | 500 bar (7140 psi) |
| <b>412 108</b> | 8,0 m  | 1/4"       | 1/4" BSP (MM)               | 500 bar (7140 psi) |
| <b>412 110</b> | 10,0 m | 1/4"       | 1/4" BSP (MM)               | 500 bar (7140 psi) |
| <b>412 112</b> | 12,0 m | 1/4"       | 1/4" BSP (MM)               | 500 bar (7140 psi) |
| <b>412 115</b> | 15,0 m | 1/4"       | 1/4" BSP (MM)               | 500 bar (7140 psi) |
| <b>412 391</b> | 1,5 m  | 3/8"       | 1/4" BSP (M) x 3/8" BSP (M) | 400 bar (5715 psi) |
| <b>412 392</b> | 1,5 m  | 3/8"       | 3/8" BSP (M) x 1/2" BSP (M) | 400 bar (5715 psi) |

**950 304**

**HIGH PRESSURE GREASE VALVE VALVES**



**950 304 - High pressure grease valve**  
500 bar (7140 psi) working pressure. 1/2" BSP (FF)

**240 500 / 246 010**

**AIR LINE ACCESSORIES**



**240 500: Combined air filter and pressure regulator. 1/4" BSP (FF).**  
For PumpMaster 3 and 3+3 pumps.  
**240 200: Air pressure regulator. 1/4" BSP (FF).**  
For PumpMaster 6 pumps.  
**241 501: Combined air filter and pressure regulator. 1/2" BSP (F) - 3/8" BSP (F).**  
For PumpMaster 6 pumps.  
**241 201: Air pressure regulator. 1/2" BSP (F) - 3/8" BSP (F).**  
For PumpMaster 6 pumps.

**246 010**



**239 000: 1/4" BSP (M) x 1/4" BSP (M) connection adapter.**  
**945 516: 1/2" BSP (M) x 1/4" BSP (F) connection adapter.**  
**239 002: 3/8" BSP (M) x 3/8" BSP (M) connection adapter.**  
**239 004: 1/2" BSP (M) x 1/2" BSP (M) connection adapter.**

**246 006: Air hose, 0,6 m. For PumpMaster 3 and 4+ pumps. 1/4" BSP (MM).**  
**246 010 : Air hose, 1,0 m. For PumpMaster 3 and 4+ pumps. 1/4" BSP (MM).**  
**246 015: Air hose, 1,5 m. For PumpMaster 3 and 4+ pumps. 1/4" BSP (MM).**

**950 302 / 950 321**



**362 100 : Air hose, 1,0 m. For PumpMaster 6 pumps. 1/2" BSP (MM).**  
**362 101: Air hose, 1,5 m. For PumpMaster 6 pumps. 1/2" BSP (MM).**

**950 302: Air needle valve, 1/4" BSP (MM).**  
**950 321: Air ball valve, 1/4" BSP (MM).**  
**950 318: Air ball valve, 3/8" BSP (MM).**  
**950 319: Air ball valve, 1/2" BSP (MM).**

**CONNECTION ADAPTORS**



**945 590: 1/4" BSP (MM)**  
**945 592: 3/8" BSP (MM)**  
**945 593: 1/2" BSP (MM)**

**945 554: 3/4" BSP (M): 1/2" BSP (M)**  
**945 557: 1/2" BSP (M) - 3/8" BSP (M)**

**945 556: 1/2" BSP (M) - 3/8" BSP (F)**  
**945 516: 1/2" BSP (M) - 1/4" BSP (F)**